

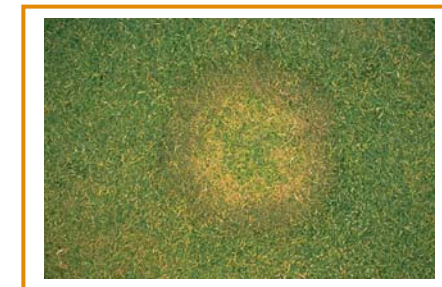
## Fusarium Patch

### BACKGROUND

- Circular patches up to 300mm in diameter.
- Leaves become water soaked, turn reddish-brown and then bleach.
- Pink mycelia may be visible in early morning.
- Develops under various conditions: wet, humid, cool (0-15°C); high nitrogen (N) fertility in autumn and excessive thatch.

### APPROACH

1. Do not apply excessive amounts of nitrogen in during high-risk periods susceptible to disease attack.
2. In autumn use fertilizers with a high K to low N ratio.
3. Spoon feeding nitrogen (either through liquids or slow release fertilizers) will avoid soft growth.
4. Control excessive thatch through programmed approach.
5. Avoid surface moisture.
6. Increase aeration.
7. Increase airflow.
8. Use acidifying fertilizers.
9. Use fungicides as part of an IPM programme and be aware of causing resistance to one chemical group by its regular use.



### i-TURF SOLUTIONS

Product type	Why	Scotts solution
Approved fungicide	Control disease.	Heritage Banner MAXX Daconil Weather Stik
Acidifying fertilizer	Reducing soil surface pH will make conditions less favourable for pathogen.	Greenmaster Greenmaster Liquid Sierraform GT
Penetrant wetting agent	Reduced surface moisture.	H2Pro Maximise
Long lasting liquid iron	Reducing soil surface pH will make conditions less favourable for pathogen.	Greenmaster Liquid Effect 6.9Fe