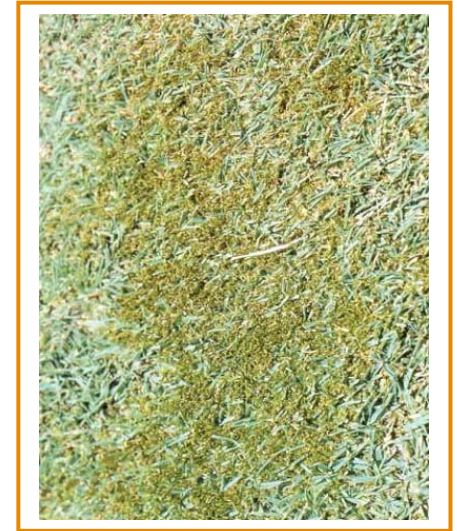


BACKGROUND

- Mosses are normally found in cool, shady moist conditions.
- Little soil is required by the moss for nutrient extraction.
- Turf with poor density is susceptible to moss infestation.
- Causes of poor density could be under fertilization, over-watering, scalping from mowing and shady conditions.
- Moss damages turf in terms of performance, aesthetics, and competition, creating vulnerability to wear and allow conditions for weed invasion.

APPROACH

1. The first strategy should be to create an environment, which is not naturally suitable for the growth of moss.
2. Increase airflow and light.
3. Increase water movement and infiltration, adjust irrigation practices to allow surface to dry out.
4. Using wetting agents with a good penetrant activity will help to remove surface moisture.
5. Raise mowing height where possible to allow turf to out compete moss.
6. Ensure turf is healthy via good nutritional programme so that it has a competitive advantage over the moss.
7. Use fertilizers containing ferrous sulphate will act directly upon the moss.
8. Control thatch in a programmed approach.
9. Once environmental conditions have been adjusted then use an approved Plant Protection Product.
10. Physically remove dead moss through scarifying.



i-TURF SOLUTIONS

Product type	Why	Scotts solution
Ferrous sulphate containing fertilizers	Ferrous sulphate kills moss via an acidification effect.	Greenmaster: Autumn 06+05+10+Fe, Mosskiller 14-0-0 + 8.9Fe
Penetrant wetting agent	This will move water away from the surface creating drier surface conditions less suitable for moss growth.	H2Pro Maximise